



# GMT MONTHLY MEMBERSHIP PROGRESS REPORT

Results as of: 5/31/2020

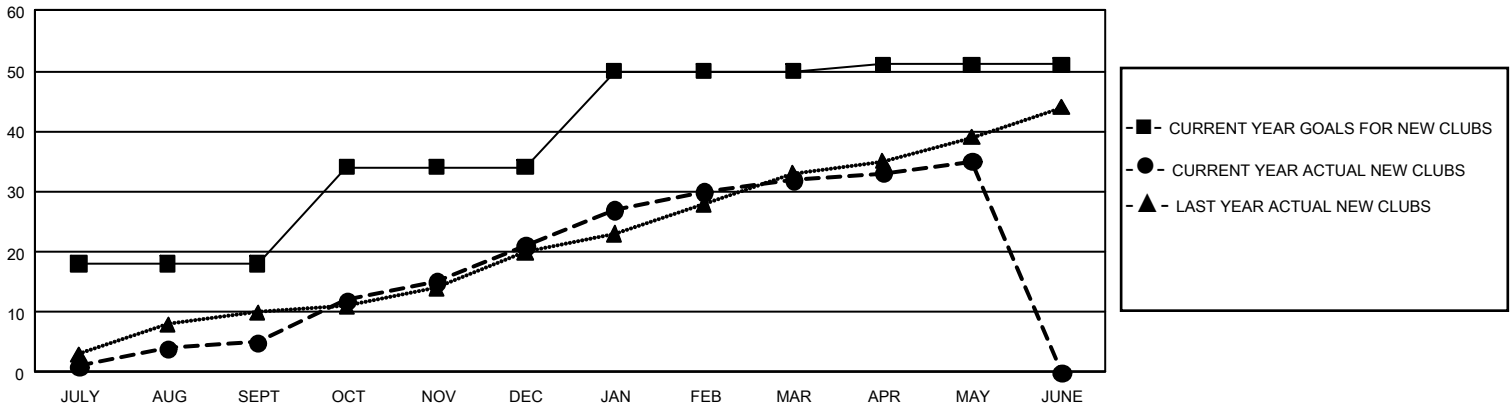
## GAT Constitutional Area 5 - Korea

REPORT DOES NOT INCLUDE CLUBS IN UNDISTRICTED AREAS.

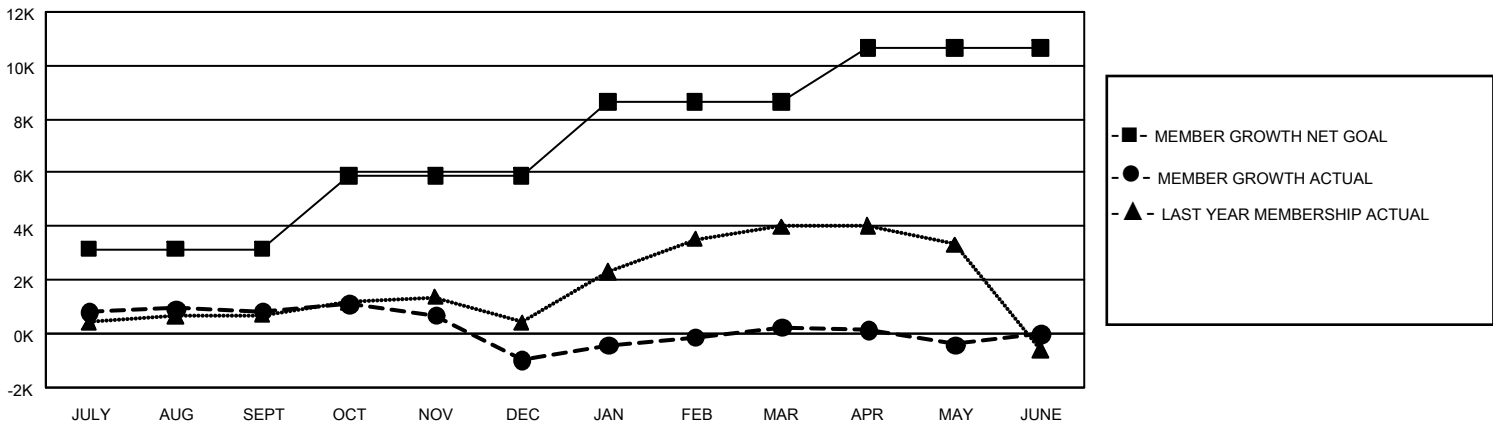
Clubs			
RESULTS FOR 2019-2020			
QUARTER	NEW CLUB GOAL	NEW CLUBS	DROPPED CLUBS
JULY/AUG/SEPT	54	5	14
OCT/NOV/DEC	48	16	20
JAN/FEB/MAR	48	11	15
APR/MAY/JUNE	3	3	1

Members			
RESULTS FOR 2019-2020			
QUARTER	MEMBER GROWTH NET GOAL	MEMBER GROWTH ACTUAL	DROPPED MEMBERS ACTUAL (including transfers)
JULY/AUG/SEPT	9,435	3,879	2,806
OCT/NOV/DEC	8,175	2,694	4,393
JAN/FEB/MAR	8,370	2,677	1,302
APR/MAY/JUNE	5,970	1,108	1,698

**GOALS AND ACTUAL NEW CLUBS CUMULATIVE**



**GOALS AND ACTUAL MEMBERS CUMULATIVE**



DROPPED CLUBS: 50	1,576 CLUBS OF 2,104 ADDED 1 OR MORE NEW MEMBERS	<b>GENDER DISTRIBUTION</b>
<b>DROPPED MEMBERS</b>	<a href="#">CLICK HERE FOR CUMULATIVE MEMBERSHIP DATA</a>	MALE            58,674 (73.90%)
DECEASED            168		FEMALE        20,718 (26.10%)
CLUB CANCELLED    427		TOTAL FAMILY UNIT MEMBERS            9,151
OTHER                    9,604		FAMILY MEMBERS PAYING HALF DUES            5,341
<b>TOTAL                    10,199</b>		